



**Rediscovering, mapping and
celebrating collective assets in the
Lagarina valley (IT)**

situating



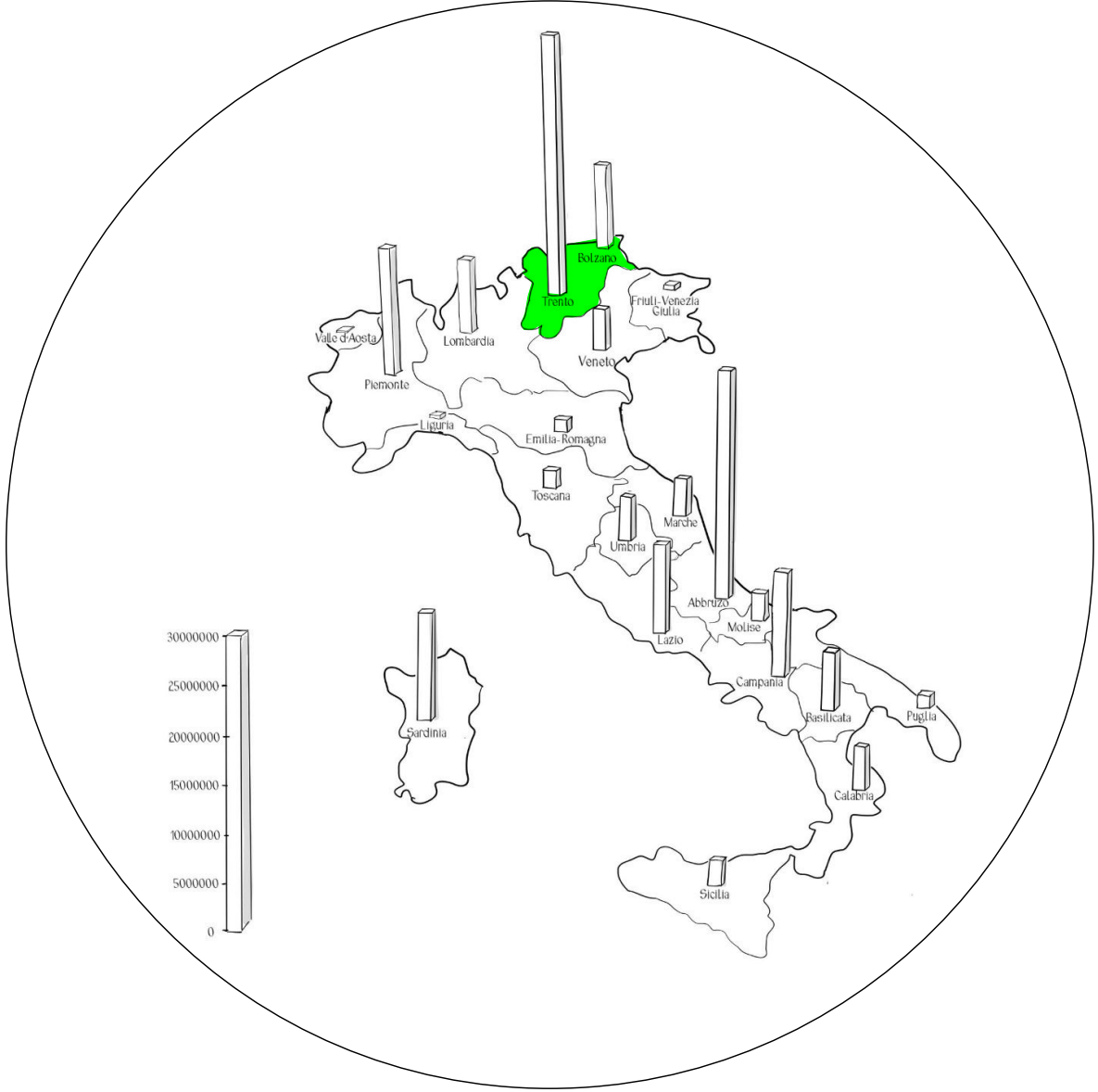
— *View on the Lagarina valley in Trentino, Italy.*



situating

— The community academy 'La Foresta' at the train station in Rovereto.

discovering



— *Uncertainty about the location of commons*

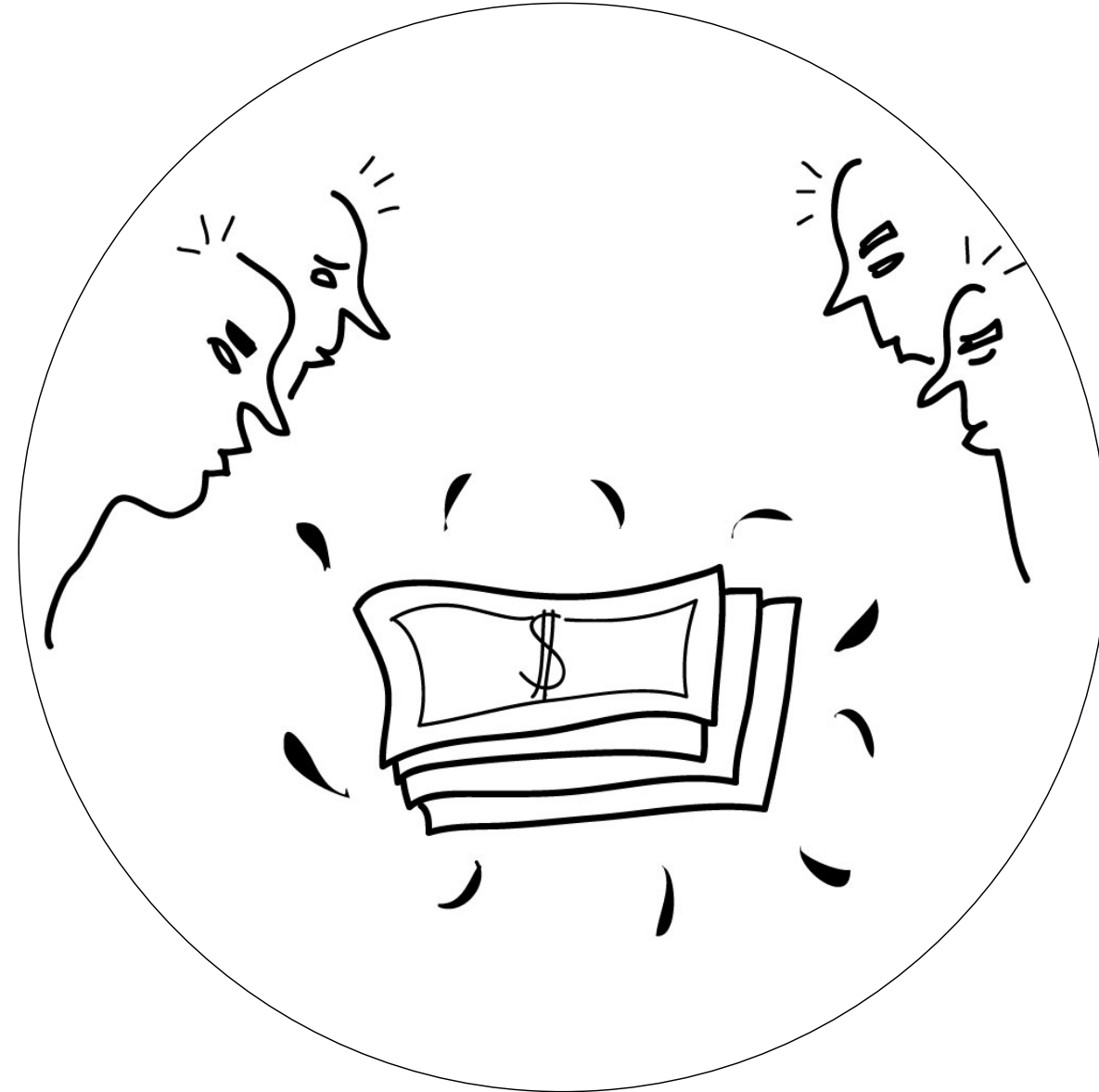


— *Pressure on land and privatization*

discovering



— *Erosion of knowledge and connection to commons*

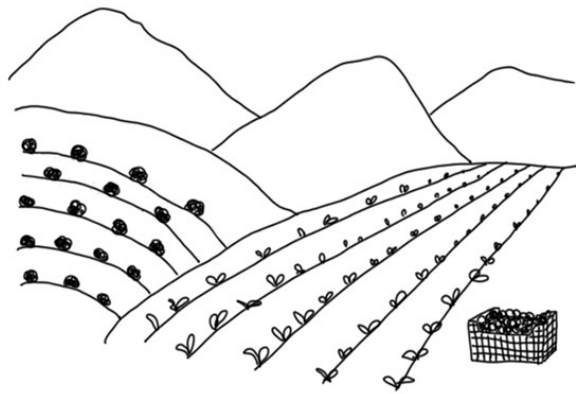
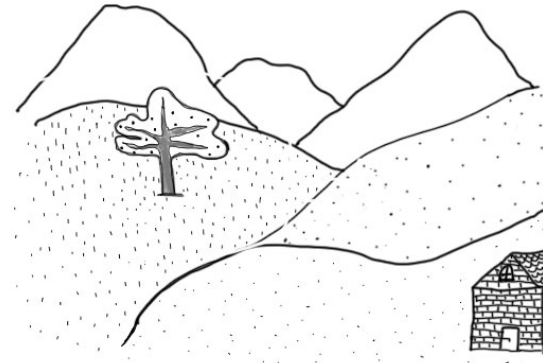
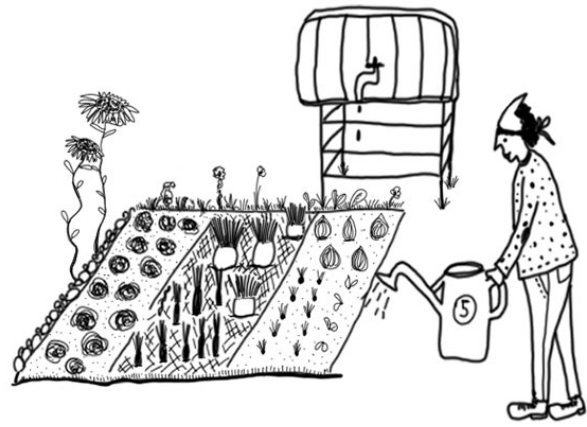


— *Transparency and trust issues in management*



discovering

— *Climate and biodiversity challenges in the Lagarina valley*



— Different types of common assets (*usi civici ~ beni collettivi*) in Trentino are recognized by national legislation (1927, n. 1766; 2017, n. 168) and provincial legislation (2005, n. 6).



practices caring for
interdependent
livelihoods

|

USI CIVICI

COMMON LAND
practices & imaginaries

|

modes of feminist
governance

interspecies &
intergenerational
weavings

—

—

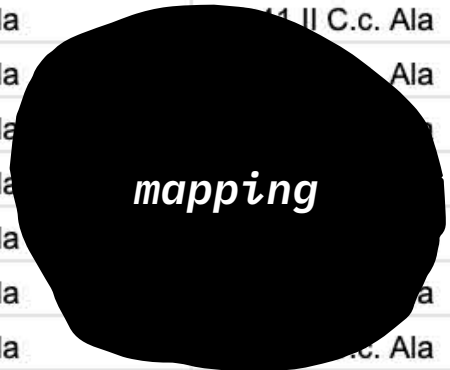
socio-ecological
translocal
surplus

— *Rethinking practices and imaginaries from an eco-feminist perspective*



— Paying for information from the land registry office, as the data is not freely accessible.

| | | | | | | | |
|----|-------|-------|----------|------|--------------|---------------|---------------------|
| 2 | 2 ALA | 1691 | ROVERETO | 2024 | improduttivo | Comune di Ala | P.T. 41 II C.c. Ala |
| 3 | 2 ALA | 101 | ROVERETO | 2024 | improduttivo | Comune di Ala | P.T. 41 II C.c. Ala |
| 4 | 2 ALA | 104 | ROVERETO | 2024 | improduttivo | Comune di Ala | P.T. 41 II C.c. Ala |
| 5 | 2 ALA | 125 | ROVERETO | 2024 | improduttivo | Comune di Ala | P.T. 41 II C.c. Ala |
| 6 | 2 ALA | 167 | ROVERETO | 2024 | pascolo | Comune di Ala | P.T. 41 II C.c. Ala |
| 7 | 2 ALA | 211 | ROVERETO | 2024 | improduttivo | Comune di Ala | P.T. 41 II C.c. Ala |
| 8 | 2 ALA | 227 | ROVERETO | 2024 | improduttivo | Comune di Ala | P.T. 41 II C.c. Ala |
| 9 | 2 ALA | 234 | ROVERETO | 2024 | improduttivo | Comune di Ala | P.T. 41 II C.c. Ala |
| 10 | 2 ALA | 243 | ROVERETO | 2024 | improduttivo | Comune di Ala | P.T. 41 II C.c. Ala |
| 11 | 2 ALA | 244 | ROVERETO | 2024 | pascolo | Comune di Ala | P.T. 41 II C.c. Ala |
| 12 | 2 ALA | 246 | ROVERETO | 2024 | improduttivo | Comune di Ala | P.T. 41 II C.c. Ala |
| 13 | 2 ALA | 247 | ROVERETO | 2024 | improduttivo | Comune di Ala | P.T. 41 II C.c. Ala |
| 14 | 2 ALA | 248 | ROVERETO | 2024 | pascolo | Comune di Ala | P.T. 41 II C.c. Ala |
| 15 | 2 ALA | 249 | ROVERETO | 2024 | pascolo | Comune di Ala | P.T. 41 II C.c. Ala |
| 16 | 2 ALA | 256 | ROVERETO | 2024 | bosco | Comune di Ala | P.T. 41 II C.c. Ala |
| 17 | 2 ALA | 257 | ROVERETO | 2024 | arativo | Comune di Ala | P.T. 41 II C.c. Ala |
| 18 | 2 ALA | 258 | ROVERETO | 2024 | pascolo | Comune di Ala | P.T. 41 II C.c. Ala |
| 19 | 2 ALA | 276 | ROVERETO | 2024 | pascolo | Comune di Ala | P.T. 41 II C.c. Ala |
| 20 | 2 ALA | 277/2 | ROVERETO | 2024 | bosco | Comune di Ala | P.T. 41 II C.c. Ala |
| 21 | 2 ALA | 278 | ROVERETO | 2024 | bosco | Comune di Ala | P.T. 41 II C.c. Ala |
| 22 | 2 ALA | 280 | ROVERETO | 2024 | bosco | Comune di Ala | P.T. 41 II C.c. Ala |
| 23 | 2 ALA | 394 | ROVERETO | 2024 | improduttivo | Comune di Ala | P.T. 41 II C.c. Ala |
| 24 | 2 ALA | 436 | ROVERETO | 2024 | improduttivo | Comune di Ala | P.T. 41 II C.c. Ala |
| 25 | 2 ALA | 440 | ROVERETO | 2024 | improduttivo | Comune di Ala | P.T. 41 II C.c. Ala |
| 26 | 2 ALA | 462 | ROVERETO | 2024 | improduttivo | Comune di Ala | P.T. 41 II C.c. Ala |
| 27 | 2 ALA | 522 | ROVERETO | 2024 | improduttivo | Comune di Ala | P.T. 41 II C.c. Ala |
| 28 | 2 ALA | 540 | ROVERETO | 2024 | improduttivo | Comune di Ala | P.T. 41 II C.c. Ala |
| 29 | 2 ALA | 689 | ROVERETO | 2024 | improduttivo | Comune di Ala | P.T. 41 II C.c. Ala |
| 30 | 2 ALA | 690 | ROVERETO | 2024 | improduttivo | Comune di Ala | P.T. 41 II C.c. Ala |



— *Systematizing, documenting, and digitizing cadastral data related to common assets.*

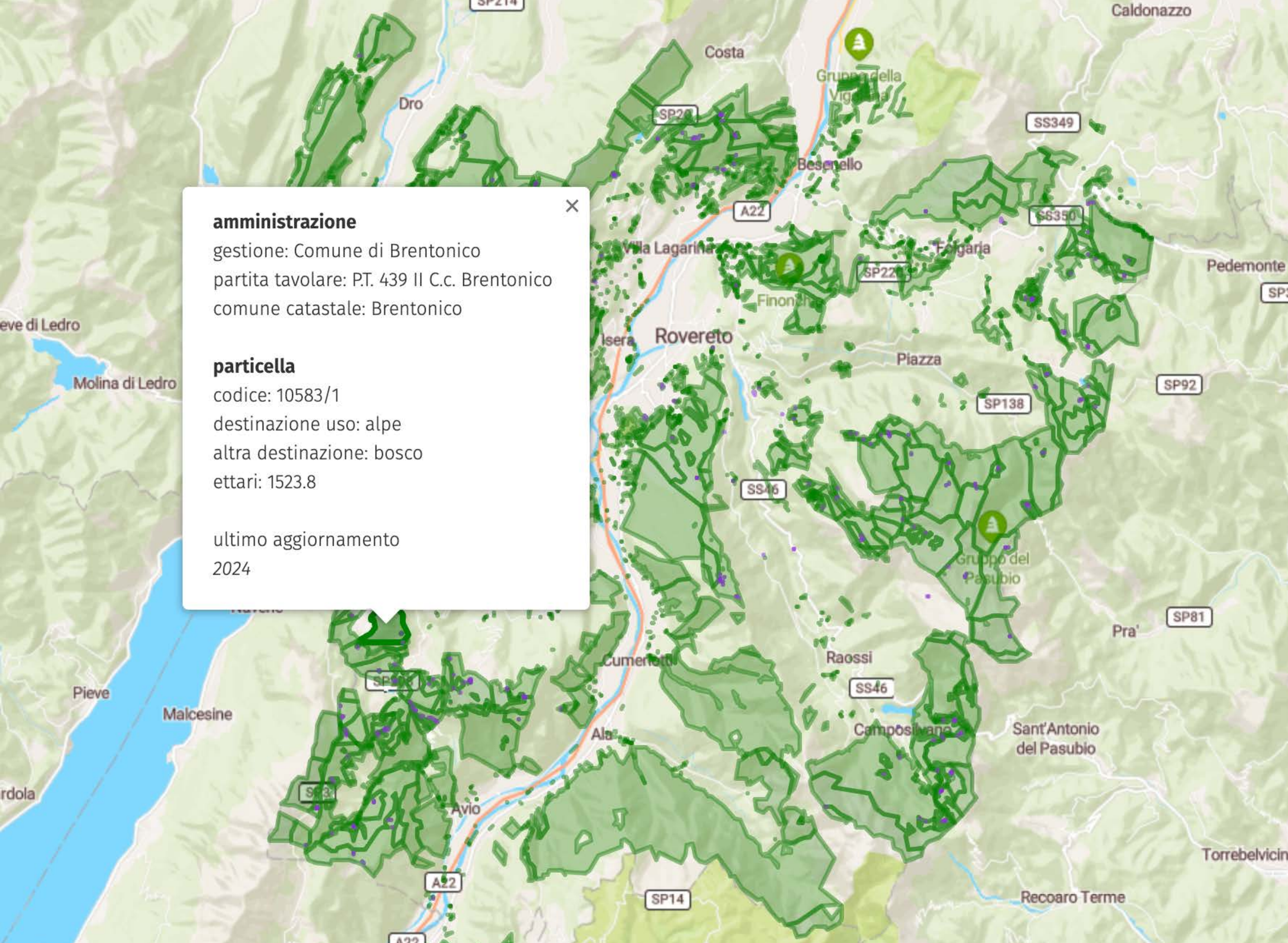
november 2024

mapping

5,253 land registry numbers

42,024 data entries

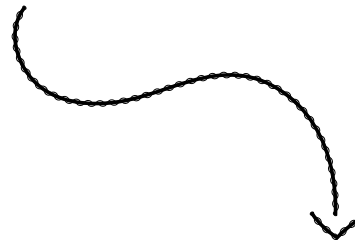
~ 40% of the surface is common land



amministrazione
gestione: Comune di Brentonico
partita tavolare: P.T. 439 Il C.c. Brentonico
comune catastale: Brentonico

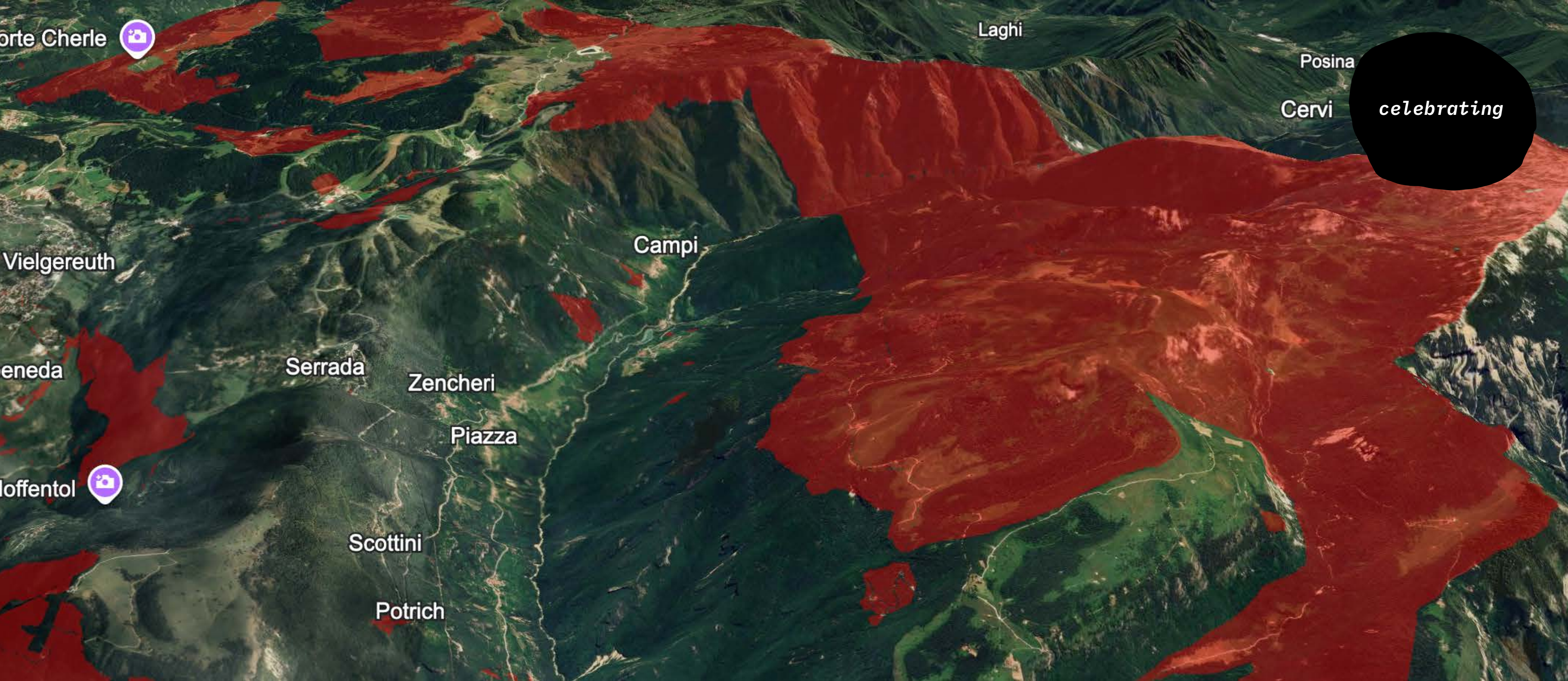
particella
codice: 10583/1
destinazione uso: alpe
altra destinazione: bosco
ettari: 1523.8

ultimo aggiornamento
2024





— *Creating printable and downloadable maps for each municipality of the valley.*



— *Importing the map into different mobile applications for exploratory walks.*

celebrating



— *Rekindling community interest in common lands through sensory-rich, collective exploratory walks.*



celebrating

— *Rekindling community interest in common lands through sensory-rich, collective exploratory walks.*



celebrating

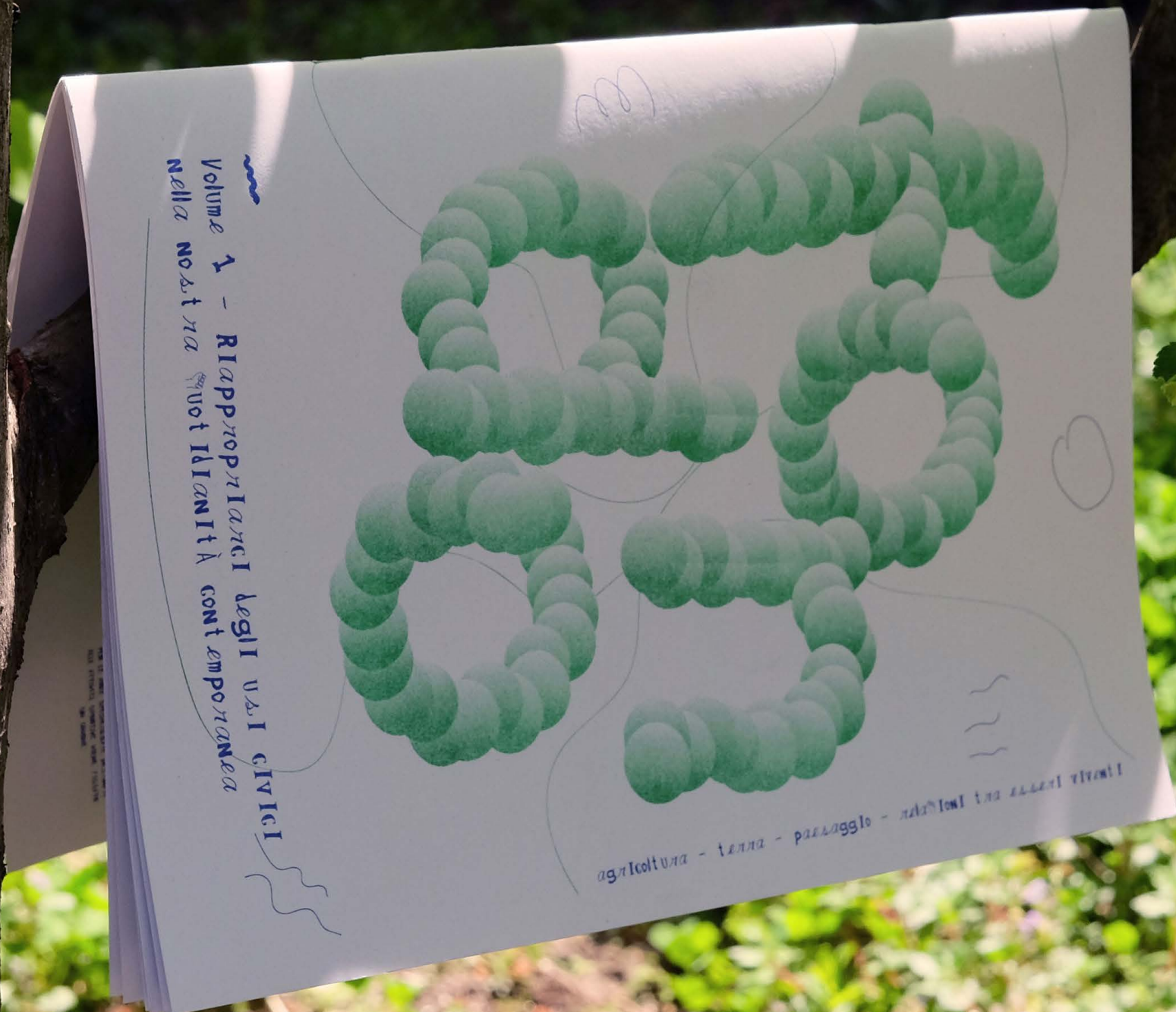
— *Rekindling community interest in common lands through sensory-rich, collective exploratory walks.*



celebrating

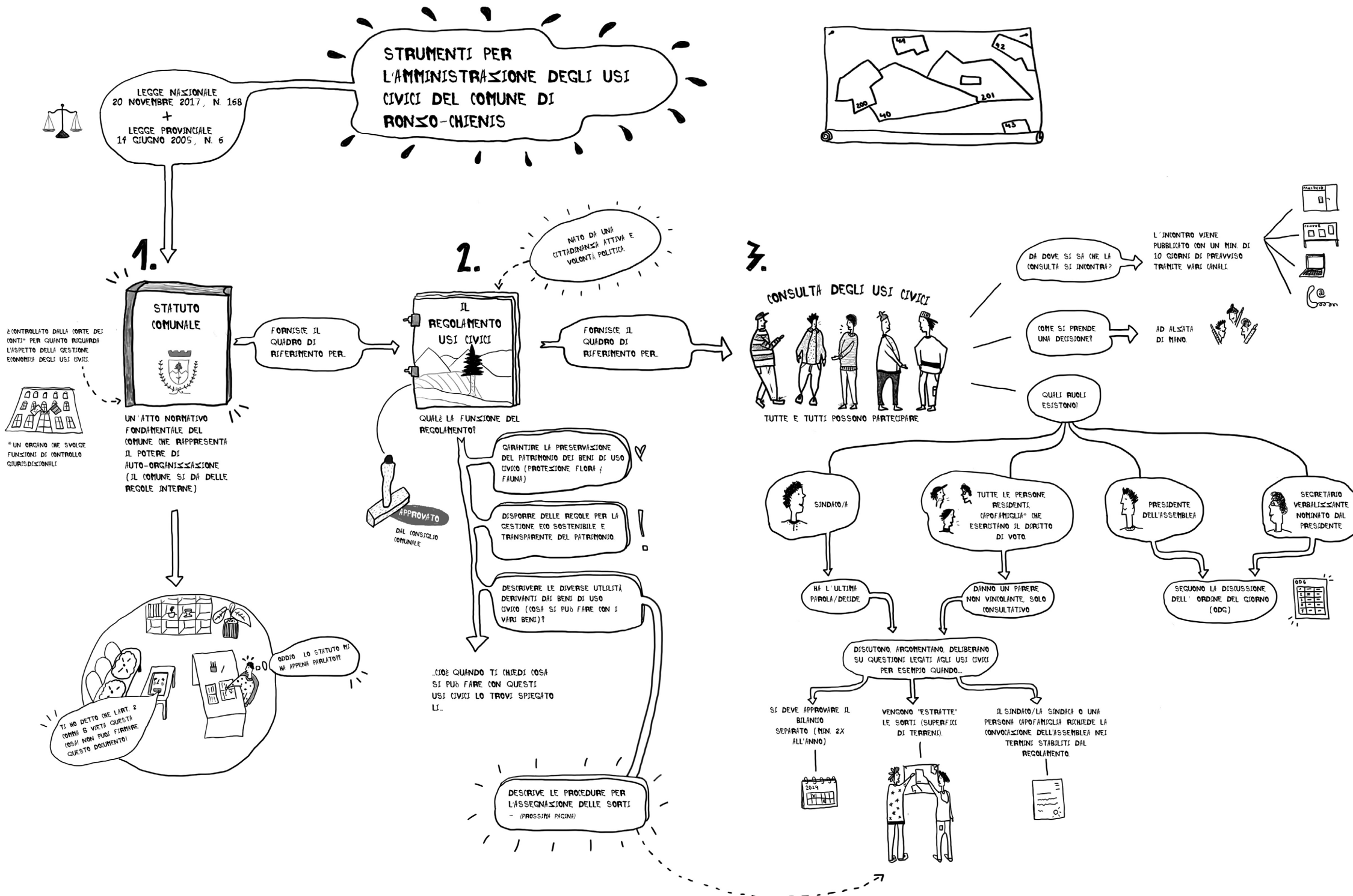
— Partnering with local groups to identify and explore inclusive, less extractive methods of managing commons.

celebrating



— Designing and distributing a community-created zine to disseminate knowledge and engage wider audiences.

celebrating



— Uncovering and sharing knowledge about inspiring management practices and cadastral data research methods.



celebrating

— Attracting new participants to the mapping initiative, some of whom now seek to expand the map to prevent enclosures in Riva del Garda.

A black and white photograph of children in a field. A large black circular overlay is positioned in the center-right of the image. Inside this circle, the word "Grazie!" is written in white, bold, sans-serif font. Below it, the email address "floramamma@laforesta.net" is written in a smaller white font. Several small green tree icons are scattered around the circle and in the field. A thick, bright green wavy line runs across the top and left side of the image. In the bottom left corner, there is a small green tree icon followed by text.

Grazie!

floramamma@laforesta.net